



GWAVACon

Solutions for GroupWise



GroupWise Bonsai and GWAVA: Today and the Future

July 15, 2008

Jaime Muñoz
Regional Director
GWAVA
jaimem@gwava.com

What's new in Bonsai: Highlights

Key Features: *Client-side improvements*

multiple columns

web/RSS views/multiple IMAP/POP

enhanced address book

pictures, birthday, google maps

WebAccess now like GW7 Win client.

also true for Linux/Mac client.

Calendar publishing

Mail stubbing



Bonsai and GWAVA

ALL GWAVA products will support Bonsai when it is released.

- Bonsai has client-side improvements mainly
- Some back-end changes exist
- GWAVA is working closely with Novell to support its newest technologies.



GWAVA Futures 1

Reload

Release of 3.0

ETA: Q3 2008

- Bonsai Support
- 64 bit support
- Multiple backups per day
- Enhanced Retain Integration
- Speed (smaller backup window)
 - Reload-to-Reload with 3% of data
 - Faster portable backups (approx 3x)
- Concurrent Back ups
 - Big time saver
 - Better disaster recovery
- Improvements in Web GUI
 - Day-to-day functions available in Web GUI

Retain

Release of 1.6

ETA: Q3 2008

- Deletion Manager
- 64 bit support
- Scalability and speed improvements 50%+
- GW Archive Migration Tool
- Mailbox view partitioner by year
- NetApp integration
- Data storage partitioner
 - Easy to use new storage if you run out

Release of 2.0

ETA: Q1 2009

- Bonsai support
- Publishing/Export
- Stubbing



GWAVA Futures 2

Reveal

Release 1.5.0.20 - Current

- User rights module enhanced
- Many speed improvements

Release 2.0

ETA: Q4 2008

- Bonsai support
- SOAP support
- .NET support
- Rights Management GUI

Vertigo

Release of 1.2

ETA: Q3 2008

- Mass administration tool*
- Win .NET application
- Client options in bulk
 - PROXY rights management
 - Folder management
 - Rules management w/backup/restore
 - Junk mail handling
- Rights management
- Address book cleanup
- Launch point for GWAVA applications
- Trusted Application Key management
- GW user creation
- Account locking/unlocking

GWAVA Futures 3

GWAVA

Version 4.0

Latest Improvements - current version

- QMS 2 - faster and more reliable
- Conversation Tracking
 - Much improved auto training

Enterprise Edition

ETA: Q4 2008

- SMTP
- SPF
- Centralized QMS
- Amsterdam (image scanning/anti porn)
- Greylisting
- Enhanced Updater
- Windows support

WASP

Release of 2.0

ETA: Q3 2008

- Runs on NetWare, Linux & Windows
- Integrates into GWAVA 4 web console
- Greatly increased functionality
 - Like GWAVA 4 filtering except:
 - Antispam
 - IP filtering
- Uses Kaspersky AV



GWAVA Futures 4

Redline

Release of 4.0
ETA: Q1 2009

- FREE for monitoring GWAVA products
- Out-of-the-box reports for all GWAVA products
- 64-bit support
- CSI Dashboard (user activity monitor)
- SMTP Reports

- Executive dashboard
- Greatly enhanced Message Tracking
- Improved Reload Integration
- Windows support
- Teaming + Conferencing support
- Improved User Interface
- Enhanced Reporting and Graphing engine
- Additional 3rd party integrations out of the box

Retain for BlackBerry Enterprise Server

Current version 1.1

- Improved Enterprise support
- Authentication using internal database
- Improved reporting and exporting
- Runs on Win/32

Tools

-<http://demo.gwava.com/>

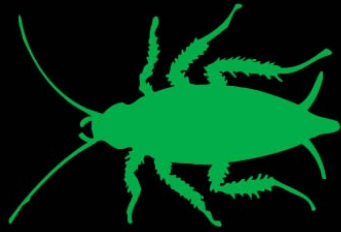
GWAVA Demo site: user=guest pass=password

Retain Demo server: <http://retain.gwava.com/RetainServer>

Reload Demo site: <http://reload.gwava.com>

- Disaster Recovery / Archiving focus
- Multi platform support
- Additional, tighter integrations
- Reload is ideal for NetWare to Linux moves
- Redline to be bundled with all GWAVA products





GWAVA